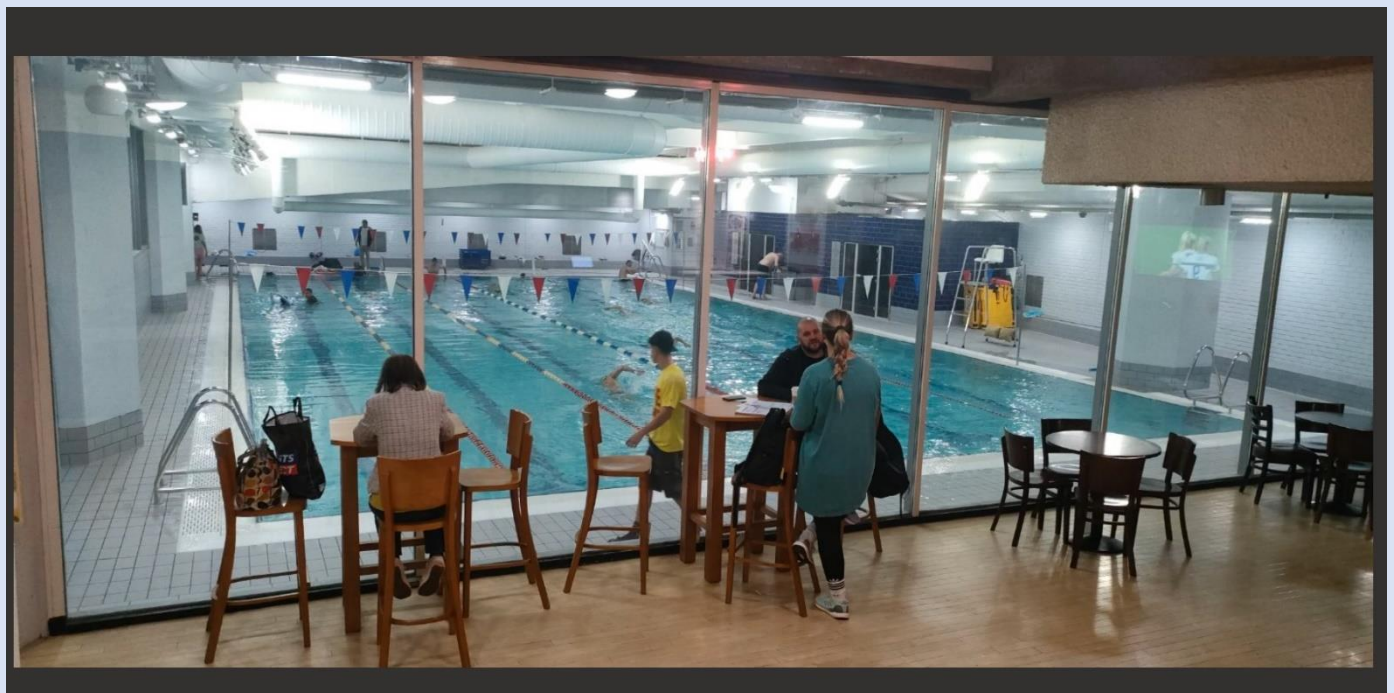


Day Thirteen

The Daily Swim





St Alban's Holborn designed by William Butterfield





## St Andrew's Holborn

From the C13th and renovated by Christopher Wren in the C17 the bell stage was added and the tower refaced in matching stone probably by Hawksmoor.

# THE HERBALIST'S PRESS

## A Garden By Fleet Street Quarter

Welcome to the Herbalist's Press - a garden designed by Wayward and inspired by the local English herbalist, John Gerard, who had a beautiful garden in Holborn (approximately where Fetter Lane is now) that contained over a thousand species of plants from around the world, painstakingly catalogued and printed in his Catalogus. He first published his wildly popular Herbal, or, Generall historie of Plantes, in 1597. Each plant in this garden has been selected based on the original Catalogus of Gerard's own garden, almost all of which contains a range of medicinal properties, given Gerard's work as the Curator of the College of Physicians Physic Garden. The planter designs have taken inspiration from the Holborn printing presses of the same period.

The Herbalist's press has been commissioned by Fleet Street Quarter for the London Festival of Architecture 2023. LFA is a month-long celebration of architecture & city-making, taking place every June across London.

Check out the code below for events and workshops this summer at the Herbalist's Press!

LFA



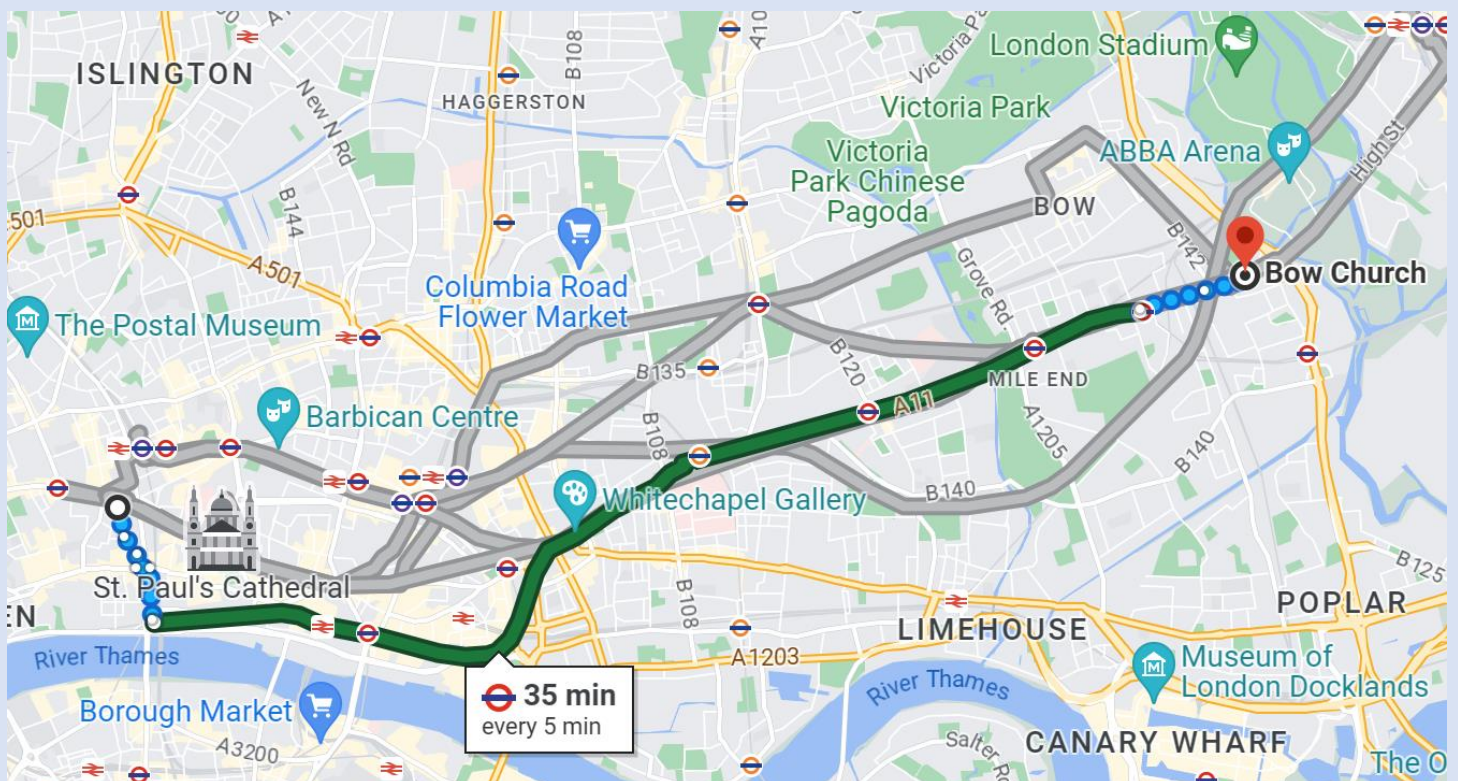
FLEET  
STREET

WAYWARD

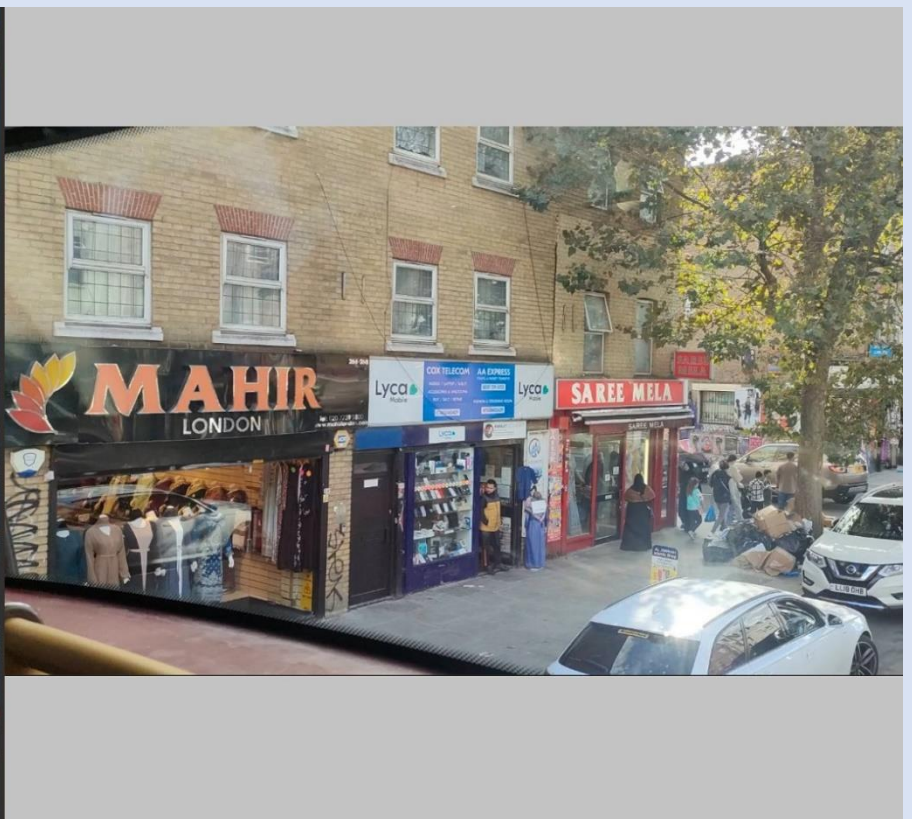




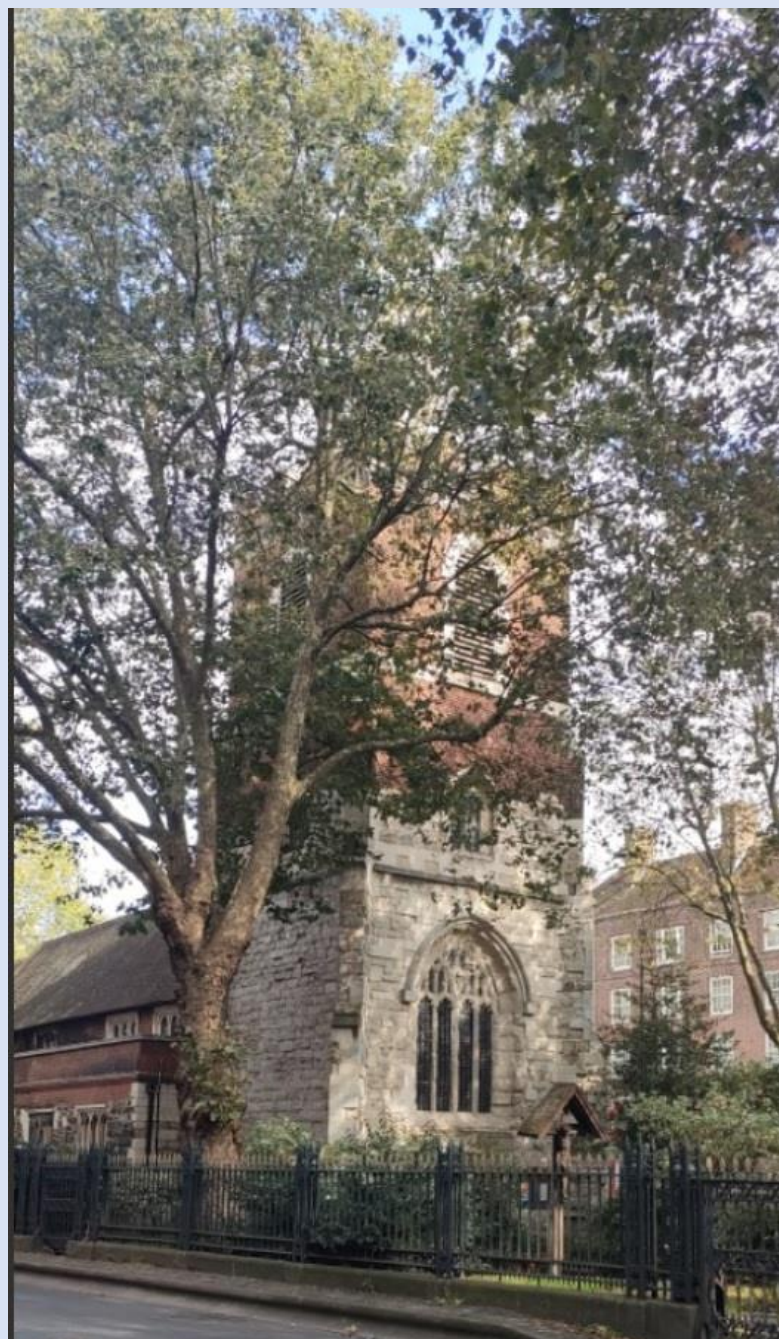
I took a bus ride from St Andrew's Holborn to St Mary and Holy Trinity, Stratford, Bow















## St Paul's Gyratory Transformation Project

The City of London Corporation is working on designs to transform the streets on the 1970's St Paul's gyratory.

The project area stretches from the Museum of London roundabout to St Paul's underground station and is characterised by wide, vehicle-dominated highways, including King Edward Street, St Martin's Le Grand and Newgate Street. The intention is to make these streets safer for people who walk and cycle and create a greener, more pleasant environment.



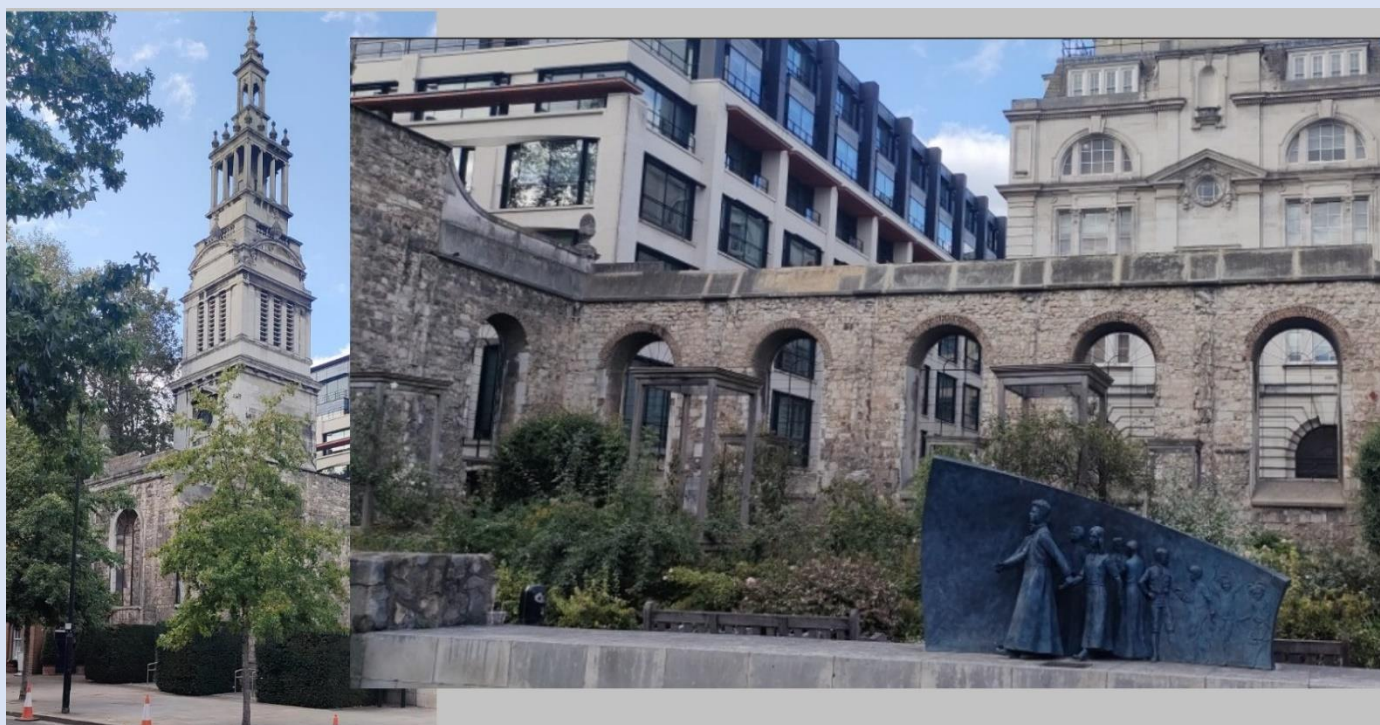
Visualisations of the proposed public space at the southern end of King Edward Street

## Welcome to Christchurch Greyfriars Garden

**This garden covers the burial grounds on the site of the former nave of Christchurch Greyfriars, which were taken over by the Corporation of London in 1931. The Rose garden was laid out in 1989 and is designed to match the floor plan of the former Wren Church. The central paved aisle is flanked on either side by box-hedged beds which represent the original position of the pews. The structures which support climbing roses and clematis are copies of the wooden surrounds which decorated the original stone pillars.**

**A second information point can be found in the churchyard on Newgate Street.**





# **St PAUL'S** CATHEDRAL

Saturday 23<sup>rd</sup> September

7.30 am

8 am and 12.30 pm

5 pm

**Morning Prayer**

**Eucharist**

**Evensong**

Introit

Canticles

Anthem

*Dominus custodit te* Rose

*Oriel Service* Judith Bingham

*The Crown of Roses* Tchaikovsky

Responses Rose

Psalms 62; 63

Hymn 247



